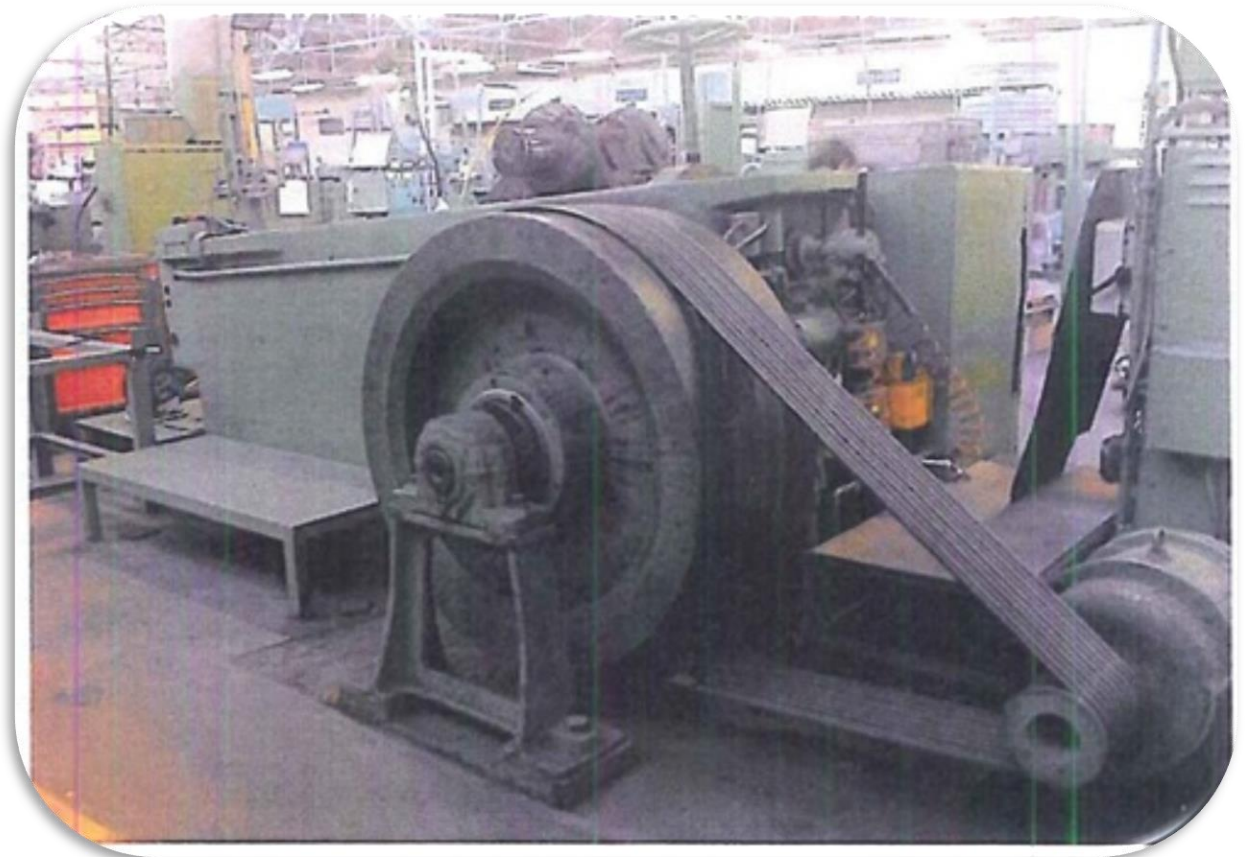


Extrusion press Herlan P10

Technical Data:

- ↗ Capacity: **620T**
- ↗ Type: **P10**
- ↗ YOM: **1954**
- ↗ Stroke: **325 mm**
- ↗ Stroking rate: **60 str/min**
- ↗ Motor: **37 kw**
- ↗ Weight: **19T**
- ↗ Aluminium part specs:
 - Max diameter: 75 mm**
 - Max extruded length: 270 mm**
- ↗ Zinc part specs:
 - Max diameter: 65 mm**
 - Max extruded length: 200 mm**



AREF Code: A1234

❖ Dismatled press